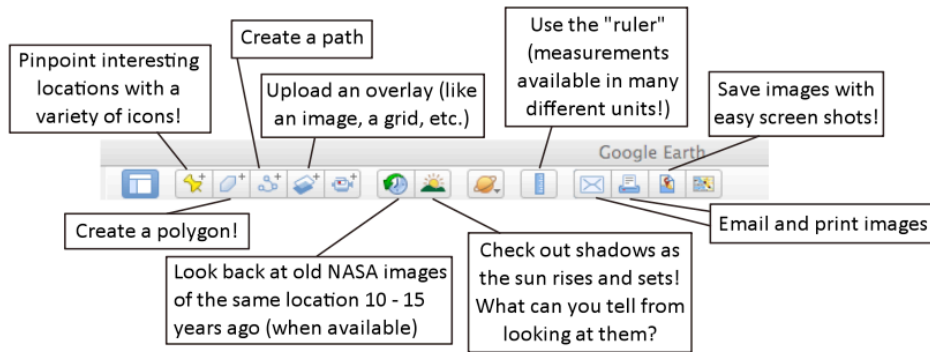


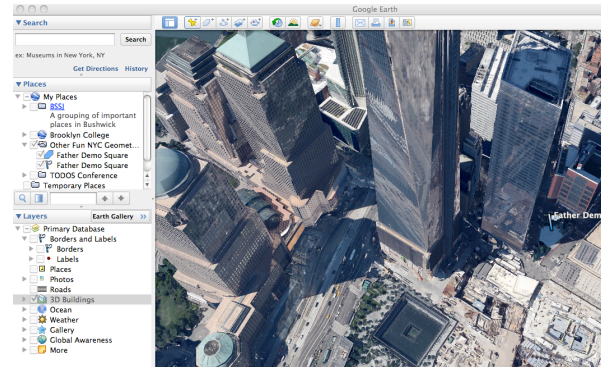
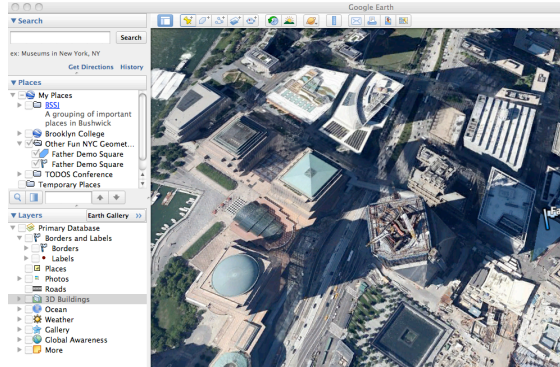



Lauren Shookhoff  
 TODOS 2014: Mathematics for All  
 Studying "Place" from Above: GoogleEarth Explorations

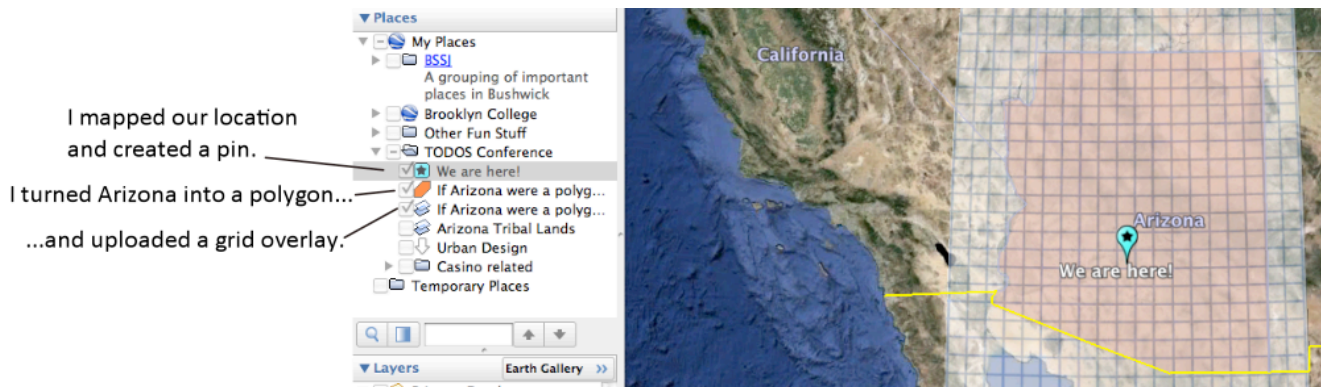
The GoogleEarth Toolbox:



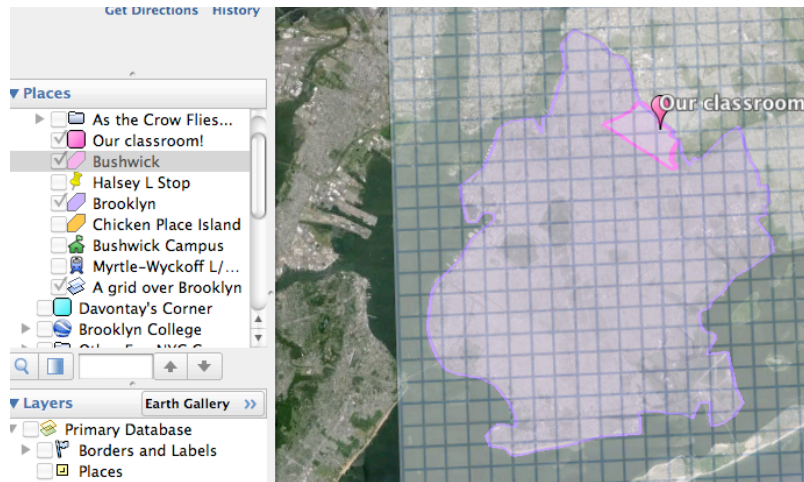
Different GoogleEarth-created views can be found in the "Layers" sidebar. One I like in particular is the 3-D layer; these two images below are the same location, but the one on the right is in "3-D."



The overlay tool :  is one of my favorites. To use this tool, I first created a folder on my computer for images I might want to upload as overlays. The most common overlay I use is a graph paper .jpg file that I've used to tool to overlay on Arizona and Brooklyn, in the images below:

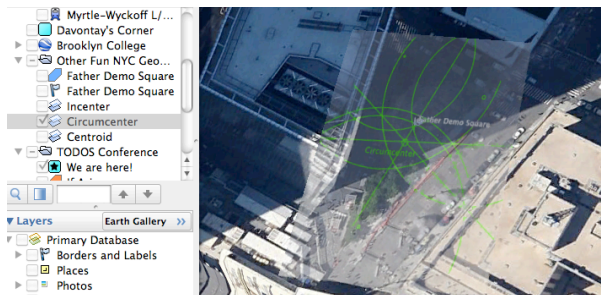


Here you can see where I mapped my classroom, created a polygon for Bushwick, created a polygon for Brooklyn, and then put a grid on top of all of it:

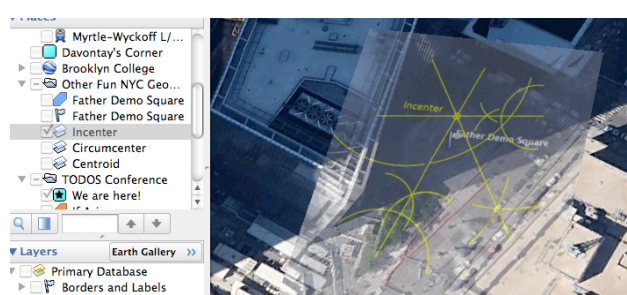


Get creative! There are all sorts of images you can create outside of GoogleEarth and then upload and overlay. In trying to figure out at which triangle “center” the fountain of triangular Father Demo Square in Manhattan is located, I created and uploaded different constructed “centers” to try:

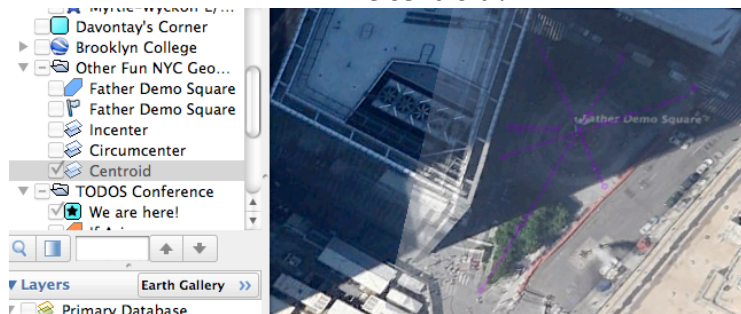
The *circumcenter*?



The *incenter*?



The *centroid*?



Last thought (for today):

GoogleEarth can be a tool for students to take us on tours of places that are important to them, places we might otherwise not get to see. Every year, my advisees guide their peers and me with a GoogleEarth tour. Through GoogleEarth, I’ve gotten to see the bodegas they buy juice at, the apartment building they live on the 17<sup>th</sup> floor of, and corners where they hang out.